

Customer :

customer

Customer part :

customer part

Comment :

Comment

S1=0.02

S2=0.15

Tmax=548

Tp S2=587.0

PI=0.11

HI=28

Sample =9306.9

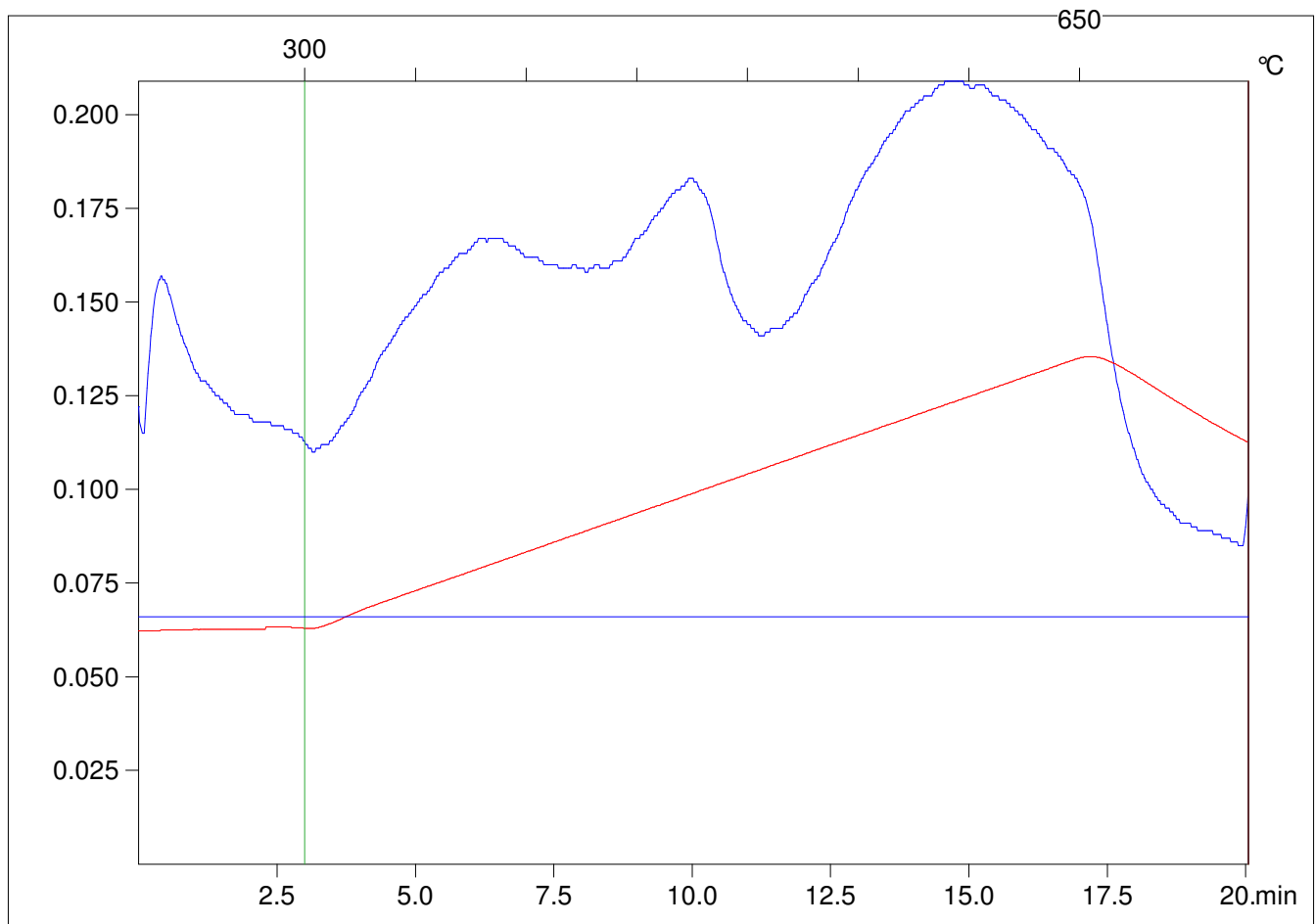
Method =Bulk Rock

Cycle=Basic

KFID(10\*9)=1167

Qty =70.7

TOC=0.53



C:\VINC\PK141015\PK068.R00 : FID pyrolysis graphic

State

Pyro Status

Oxi Status